

Boki 2052 (E), Boki 2552 (E)  
Boki 2651, Boki 4552, Boki 6552



## The compact specialists



**REFORM Boki**

Compact. Agile. Wide reach.

REFORM. Teamwork Technology.

# The versatile cemetery excavators



Boki excavator 2651



Boki excavator 6552



Boki excavator 6552



Boki excavator 2552 E



Boki excavator 4552



Boki excavator 2552 E



Boki cemetery excavators are specially designed for use in cemeteries. The machines, developed by the pioneer of cemetery excavator technology, are divided into hand-guided excavators, for use in particularly narrow sites, and mobile excavators, which are also self-propelled.

The proven quality, the enormous versatility, and the high economic efficiency have been adopted within many municipalities and cemetery operators all over Europe, for decades.

## The benefits of Boki for you

- Narrow dimensions
- Manoeuvrability
- Safety and visibility
- User-friendliness
- High performance
- Powerful hydraulics
- Driving comfort
- Wide product range of hand-guided excavators
- Three different mobile excavators



# The Boki excavator at a glance

Groundbreaking as a benchmark for cemetery technology. For decades, the BOKI three-wheel cemetery excavator has set the bar in many cemeteries. Ongoing technological and ergonomic development reinforces this high standard. With continuous, mechanical track adjustment, you can reach your working location through passages down to 83 cm wide.

## Workplace

- Good all-round view
- Logical arrangement of operator controls
- Piano control (not on mobile excavators)
- Joystick control
- Comfortable level of background noise
- Convenient entry
- Ergonomic cab
- Tilting cab on mobile excavators

## Drive technology

- Level compensation
- Axle locking
- 4 different steering modes
- Extremely agile and flexible application
- Minimal overhang at the rear
- Excellent weight ratio
- High soil protection

### Hand-guided models:

- Hydraulic wheel motor drive
- Fast driving mode up to 6 km/h
- 4 wheel mode
- Control button on the drawbar



### Mobile excavators:

- Hydraulic wheel motors
- 2 speed levels
- Automotive control system
- Locking differential
- 4 wheel drive optional activation



## Engines

- Diesel engines
- High torque
- Enormous tractive power
- Kubota engines (performance class between 23 to 45 hp)
- VM turbo-diesel common-rail engines (in a performance class of 71 to 98 hp)



Equipped as standard with weatherproof roof, four-wheel drive, support legs and joystick control, the basic version already offers a comprehensive range of equipment. The mobile excavators are now available in 3 versions: the Boki 2651 with an external width of 1.10 m, the Boki 4552 with an external width of 1.20 m, and the largest Boki 6552 with an external tyre width of 1.40 m. During the development of the REFORM Boki, special attention was paid to durability, robust design, and ergonomics for users.



## Models

### Compact excavators

- Boki excavator 2052 (E)
- Boki excavator 2552 (E)

### Mobile excavators

- Boki excavator 2651
- Boki excavator 4552
- Boki excavator 6552

## Service

- Integrated hose breakage protection
- Bio hydraulic fluid
- Maintenance intervals
- Ease of service
- Easy access to components

## Operating characteristics

- Cranked lifting arm
- Deep excavation depth and large radius
- Telescopic arm (reach of up to 7 m)
- LIFD system (load pressure independent flow distribution)
- Quick-release system
- Heart-shaped gripper
- Sturdy outriggers



# Technical highlights

## Drive

- Hydrostatic drive
- Level compensation
- 4 wheel drive
- Different steering modes

### Hand-guided models

- 2 driving modes
- Easy operation at the drawbar

### Mobile excavators

- Stepless drive
- 2 speed levels
- Automotive control

## Drive technology

The proven drive technology of Boki excavators gives you efficient use in many different operating conditions.

### Drive for hand-guided models

The hand-guided models have a hydraulic wheel motor drive, which makes the excavator easy to manoeuvre.

The operator can choose between 2 driving modes:

- Fast travel

In this mode, only the single-wheel motor is driven. The excavator

reaches the maximum driving speed of approx. 6 km/h in this mode.

- 4 wheel drive

All three travel motors are driven simultaneously in 4 wheel drive mode. The drive achieves the highest traction at a maximum speed of 2 km/h.

The hand-guided Boki Excavator is manoeuvred using the control buttons on the drawbar.

The controls are not only used to drive the Boki, but optionally also to regulate the level. This allows the excavator to be easily placed at its working location and correctly levelled.



### Mobile excavator drive

On the Boki 2651 mobile excavator, all four wheels are permanently driven by hydraulic wheel motors. This provides the best traction and performance. The two larger models 4552 and 6552 of the REFORM Boki series have an innovative drive concept. The hydrostatic drive has 2 speed levels and is controlled automatically. This means that the

excavator's driving speed can be controlled exclusively via the engine speed. The traction power of the travel drive automatically adapts to the changing load resulting from different driving situations. The drive is on the front axle, which is equipped with a locking differential. The 4 wheel drive can be engaged for better traction.



## 4 wheel drive

All Boki mobile excavators have a self-locking differential on the front axle. This provides better traction in difficult conditions. In addition, if traction is poor, the four-wheel drive can be activated via the mechanical transfer gear.

The 4 wheel drive can be turned on and off easily via a switch. An indicator light in the dashboard alerts the driver when 4 wheel drive is activated.



## Level compensation and axle locking

Most Boki excavators can be equipped with level compensation. With level compensation, the excavator can be tilted to the left or to the right. Level compensation is electro-hydraulic

and can be operated with ease from the driver seat. The sprung Boki Excavators can also be equipped with optional axle locking, which locks the suspension hydraulically. Axle locking

is especially designed for driving on uneven terrain.

## Steering modes

The various steering modes of the Boki mobile excavators provide exceptional manoeuvrability. There are 4 different

steering modes available.

- Front steering
- 4 wheel steering

- Crab steering
- Rear steering



## Dimensions and overhang

With a width of 83 to 150 cm, Boki excavators are extremely agile and flexible. There is always the right model, even for the narrowest of working conditions. With a width from only 98.5 cm, the mobile excavators are also extremely agile and can reach practically any site.

In addition to the narrow dimensions, the minimal overhang at the rear makes for comfortable working, even in the tightest of spaces.



# Technical highlights

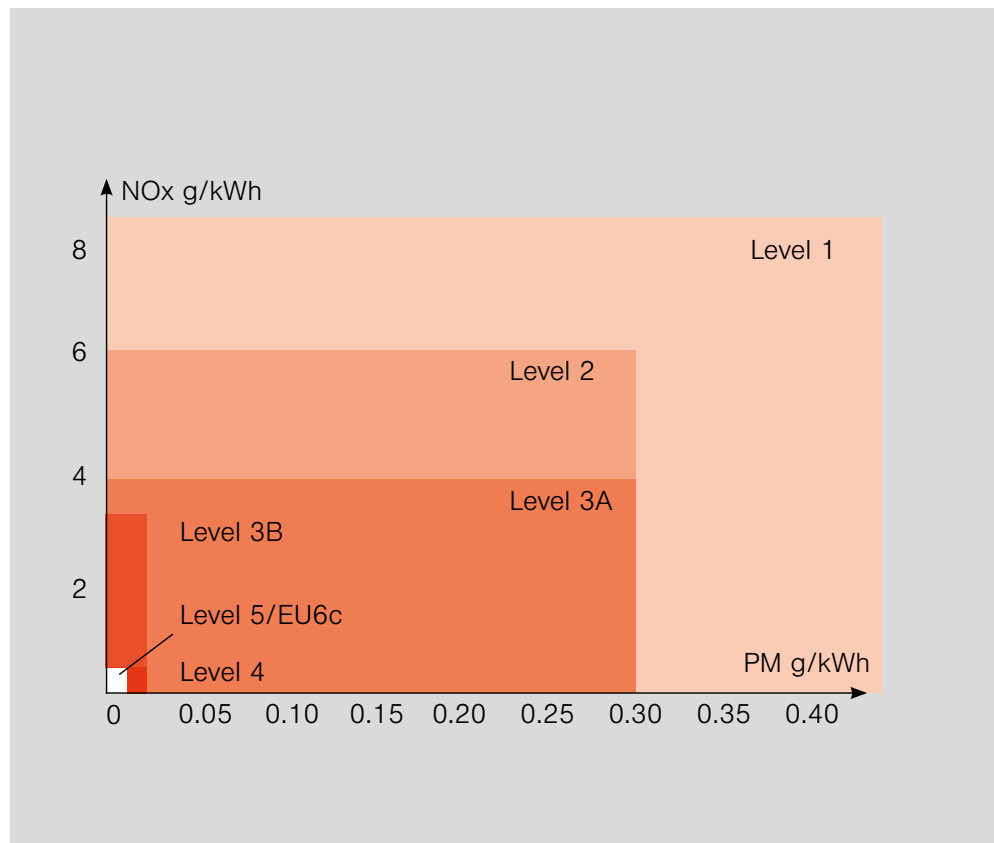
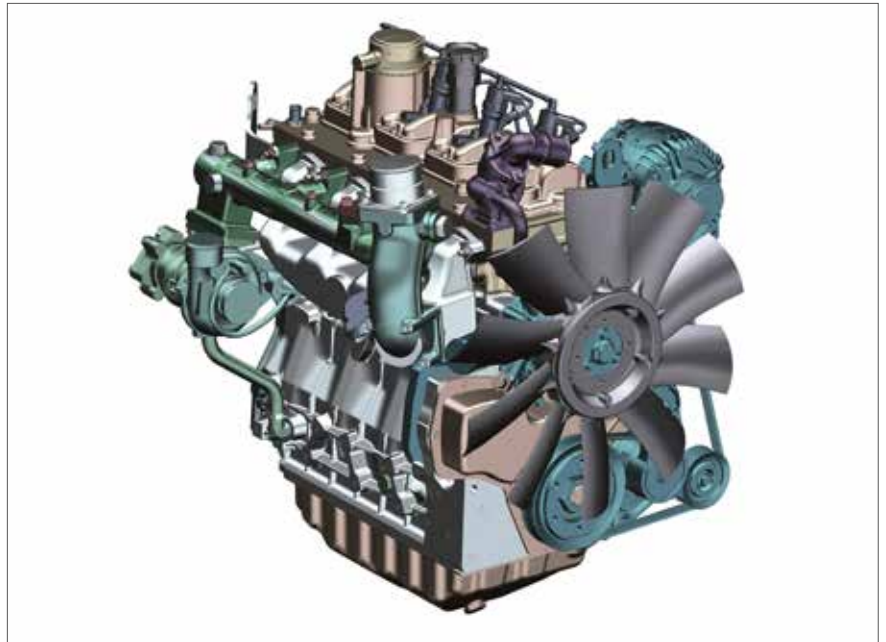
## Engine

- Kubota diesel engines 23 to 45 hp
- VM diesel engines 72 to 97 hp
- Modern exhaust gas treatment
- High torque
- Low fuel consumption
- High efficiency

## Engines

The flexible and extremely efficient diesel engines utilise a very high torque over a wide speed range, and benefit from enormous tractive power. The high torque ensures full power and flexibility in the partial load range. The mounting of engine and cab keeps oscillations and vibrations out of the cab.

Kubota's tried and tested engine technology is used in the performance class between 23 and 45 hp. Modern, powerful turbo-diesel common-rail engines from VM Motori with 72 to 97 hp output ensure maximum efficiency and master every task effortlessly.



## Engines with emission level 5

The models in the category up to 37 kW/50 hp are equipped with Kubota engines that will meet the requirements of emission level 5, from the end of 2019. They are equipped with exhaust gas recirculation and diesel particulate filters. The Boki 4552 has a VM engine with 72 hp. These engines come with exhaust gas recirculation and a diesel particulate filter to meet the legal requirements of emission level 5. The Boki models are equipped with self-regenerating particulate filters.

The closed-loop diesel particulate filter system reduces soot emissions by over 98%. The system also absorbs and eliminates 99.9% of particulate matter.

The top model, the Boki 6552, is equipped with a VM engine that complies with emission level 5 or Eu6C. A diesel particulate filter and an SCR catalytic converter with AdBlue injection are required to meet this emission standard.



## Tyres

A large selection of different tyres provides optimum grip for all applications. Various tyres with different special treads ensure maximum traction, low ground pressure, and reliable safety during operation. They provide grip on difficult soils and in harsh operating conditions.



## Exhaust gas treatment

The different performance classes require different exhaust gas treatment systems. The requirements for exhaust gas treatment increase with higher performance, and are continuously being tightened up by the legislator in various countries.

REFORM complies all legal regulations throughout its product range, and constantly offers its customers the latest technology for engines and exhaust gas treatment systems.

The more stringent emission levels reduce various pollutants in the exhaust gases of diesel engines.

- Carbon monoxide (CO)
- Hydrocarbon (HC)
- Nitrogen oxide (NOx)
- Particulate matter (PM)

Installing different exhaust gas treatment systems greatly reduces emissions of pollutants.

## Technical highlights

### Operating characteristics

- Long reach and excavation depth
- Specially cranked lifting arm
- No damage during excavation work
- Powerful LIFD hydraulic system
- High level of convenience, due to quick-change system
- Best working results thanks to heart-shaped gripper
- Wide outriggers for safe working

## Operating characteristics

Thanks to innovative solutions, Reform Boki excavators are reliable partners when it comes to demanding excavation work.

### Cranked lifting arm

A long reach and excavation depth are important prerequisites for using a Boki cemetery excavator. Thanks to the cranked lifting arm, even deep graves can be dug easily without the boom colliding with the edge.



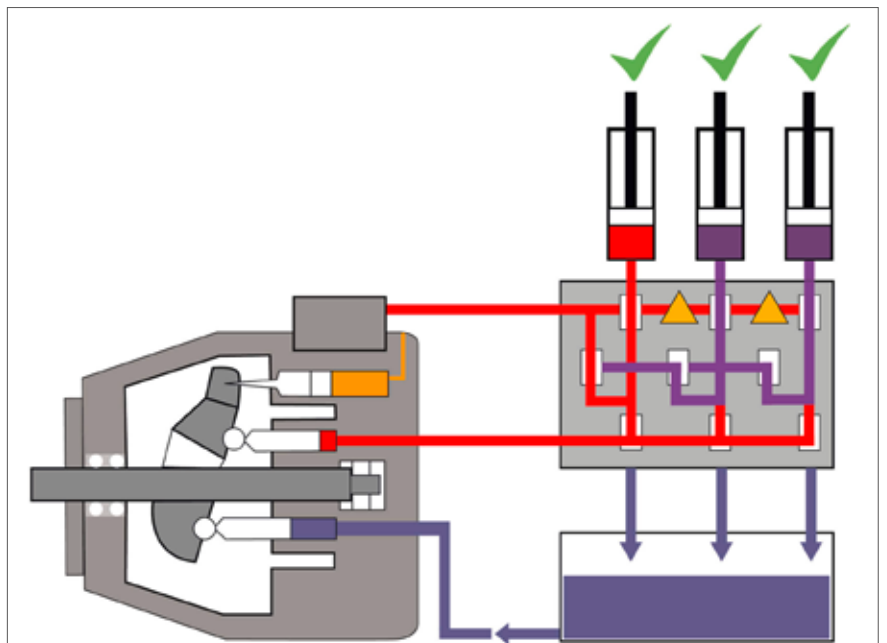
### Telescopic arm

If long reaches are required, the Boki cemetery excavators can be equipped with a telescopic arm. This allows the boom to be extended to a reach of up to 7 m. The telescopic arm is adjusted hydraulically via a double-acting cylinder. The internal cylinder is optimally protected against dirt and damage. The telescopic arm increases the excavation depth and radius substantially.

### LIFD

The new LIFD (load pressure independent flow distribution) system exploits the advantages of classic load sensing systems, combined with an improvement, which makes it possible to supply all active hydraulic

consumers with fluid in the event of desaturation. This system makes it possible to significantly increase the efficiency of the hydraulics, while reducing fuel consumption.



### Quick-release system

The Boki Excavators can be equipped with a quick-release system so that the various tools can be changed quickly. The quick-release system means the gripper can be replaced in seconds by a load hook or exhumation fork.

### Heart-shaped gripper

The heart-shaped gripper allows particularly gentle excavation. The special shape of the gripper makes it narrower when closing. This prevents the outer wall from being damaged or collapsing.



### Outriggers

All Boki Excavators have solid outriggers for safe working. In combination with a low centre of gravity and wide outriggers, safe working is guaranteed in every situation. The outriggers have a variety of options and can be extended/retracted mechanically, or hydraulically as an option. Different types of folding, telescopic outriggers are available.

As an option, the outrigger of the front shield of mobile excavators can be replaced by support feet.

via the central hydraulic control unit. The supports can be extended and retracted hydraulically.

Lateral adjustment of the outriggers on the compact excavators and the 2651 is via forged toothed pulleys. On the larger 4552/6552 mobile excavators, this feature can operate hydraulically. Each outrigger is operated individually



# Technical highlights

## Workplace

- Good all-round view
- Logical arrangement of operator controls
- Piano control
- Joystick control
- Comfortable level of background noise
- Convenient entry
- Ergonomic cab
- Tilting cab on mobile excavators

## Boki workplace

A comfortable workplace is crucial for fatigue-free, concentrated work.

### Hand-guided excavator cab

A cab with good all-round view, logical arrangement of the controls and unobtrusive background noise levels provides a pleasant working environment. Easy entry and the generous space make the Boki a comfortable workplace.

The cabs of the hand-guided excavators have an ergonomic cab, which can be equipped with doors and windows.



### Mobile excavator cab

The cabs of the mobile excavators combine maximum comfort and optimum visibility to create the ideal tool. The deluxe cab is equipped with heating and can also be equipped with air conditioning. With the high cooling capacity of the air conditioning system, the driver keeps a cool head even on hot days.

Large glass windows and hinged windows considerably increase working comfort. With a perfect all-round view, the driver always has an

excellent view of the surroundings and the excavator, increasing safety and ensuring a stress-free working environment.

To simplify maintenance and repairs, the mobile excavators are equipped with a tilting cab. This tilting cab provides quick and easy access to the main components of the excavator.

## Controls

A high level of user-friendliness is particularly important for different applications in difficult situations.

The driver must be able to find the important functions intuitively.



### Piano control

The piano control makes it easy to operate all the important hydraulic functions of the Boki compact excavator. All functions are controlled individually by the various levers.



### Joystick control

The convenient joystick control can be used to operate all functions easily, with 2 different joysticks (one joystick on certain models). These joysticks can each be moved in 2 directions to carry out the individual operations. With the push of a button, additional functions can be operated by moving the joystick. Movement is via a proportional hydraulic system.

### Remote control

The Boki 2051 RC and 2551 RC models can be controlled via wireless remote control. All functions can be operated via the wireless remote control. This allows the operator to operate and control the excavator from a safe distance.

The main functions are operated via 2 ergonomic joysticks. Various switches are available for the additional functions. The controller has a powerful transmitter/receiver unit.



# Boki excavator 2052 (E) & Boki excavator 2552 (E)

## Narrow, agile and powerful.

Extremely narrow and manoeuvrable excavators are required for cemeteries, but they also have to meet the highest demands in terms of power and reach. Due to its narrow external width, the hand-guided compact excavator is ideally suited to areas where space is at a premium. The manoeuvrability of a tricycle excavator is particularly in demand in such narrow spaces. With an external width of 83 cm, the Boki 2052 and 2552 are perfectly suited to even the narrowest of entrances. In the basic version, the Boki 2052 and 2552 E are also available with joystick

control for ergonomic handling.

Optionally, the excavators can be equipped with a telescopic arm. This also increases the radius of the excavator to reach inaccessible locations.

With its powerful 4-cylinder diesel engine with 18.5 kW/25.1 hp, the Boki 2552 is the more powerful alternative to the Boki 2052.



### Engine

Kubota D1005-E4B  
17.5 kW/23.8 hp  
Emission level 5  
Kubota V1305-E4B  
18.5 kW/25.1 hp  
Emission level 5



### Chassis

3-wheel chassis  
Hydrostatic 4 wheel drive  
BOKILOCK differential  
lock system  
Hand-guided steering drawbar  
Track width 830 - 1,250 mm  
Tyres 18 x 9.50 - 8 turf tread



### Operating characteristics

Overhang 3,750 mm  
Lifting force 830 kp at 3,000 mm  
Continuously revolving superstructure



### Hydraulic system

Hydraulic pump 2 x 22 l/min  
or 1 x 32 l/min  
or 1 x 22 l/min  
at 180 bar  
Piano control or  
2-lever joystick control

# Boki excavator 2651

## Safe working – even in confined spaces.

The Boki 2651 is the entry model for the class of mobile excavators. With a weight of less than 3 tonnes and an external width of under 1 metre, the Boki 2651 is extremely manoeuvrable and can be used on narrow cemetery paths. Thanks to its low rear overhang, you can work safely, even in narrow areas.

A powerful hydrostatic drive is used for journeys between work sites, delivering a top speed of up to 20 km/h.

The Boki 2651 is equipped with a 33 kW/45 hp Kubota turbo-diesel engine. Thanks to pre-controlled hydraulics

and load-sensing steering, the excavator can be operated conveniently with the joystick. The deluxe cab with air-cushioned driver seat has been decoupled from the rest of the vehicle, and thereby optimised in terms of noise and climate. It can be completely tilted backwards for service purposes, providing good accessibility for maintenance.

Optionally, the excavator can be equipped with a telescopic arm, which also increases the excavator's radius to reach inaccessible places.



### Engine

Kubota V1505-B  
33 kW/45 hp  
3,000 rpm nominal speed  
Emission level 3A



### Chassis

4 wheel chassis  
Hydrostatic 4 wheel drive  
4 wheel steering  
Drum brake  
Track width 980 mm  
Tyres 23 x 10.5 -  
12 turf tread  
17 or 20 km/h



### Operating characteristics

Overhang 4,800 mm  
Lifting force 830 kp at 3,000 mm  
Continuously revolving superstructure



### Hydraulic system

Hydraulic pump 1 x 32 l/min  
1 x 22 l/min  
at 180 bar  
2-lever joystick control

# Boki excavator 4552

Ideal for confined spaces.

REFORM's Boki 4552 is a compact mobile excavator with a boom reach of up to 6.5 m. With an external width of 1.22 m combined with 4 different steering modes, the Boki 4552 gives you perfect positioning, even in confined spaces. With a top speed of up to 40 km/h, the Boki 4552 can be quickly transferred between different work sites.

The reach can be selected with 3 different booms with telescopic arms; either a reach of 4.8 m/5.6 m or 6.5 m is available.

The Boki 4552 has a tilting cab, which makes maintenance much easier. Inside the cab, what first catches the eye is the ergonomically designed driver seat with integrated pilot valves in the arm rests to prevent relative movements. The two-lever cross control with pilot-operated valves also makes working considerably easier.



## Engine

FPT/VM  
52 kW/71 hp  
2,600 rpm nominal speed  
Emission level 3B



## Chassis

4 wheel chassis  
Hydrostatic 4 wheel drive  
4 wheel steering  
Drum brake  
Track width 1,220 mm  
Tyres 205/75 R 16 C  
20/25/30 or 40 km/h



## Operating characteristics

Overhang 4,800 mm  
Lifting force 830 kp at 3,000 mm  
Continuously revolving superstructure



## Hydraulic system

Hydraulic pump 1 x 70 l/min  
at 210 bar  
2-lever joystick control

# Boki excavator 6552

The most powerful  
REFORM mobile excavator.

The Boki 6552 is the most powerful REFORM mobile excavator. With its strong 4-cylinder 98 hp VM diesel engine, the Boki 6552 is a real powerhouse. Equipped with a powerful hydrostatic drive for a maximum speed of up to 40 km/h, rapid site relocations are possible. The Boki 6552 also sets the standard in terms of performance. It can achieve a reach of 6.5 m or even 7.0 m with a telescopic boom. The standard version has a reach of 5.4 m. Equipped with a powerful load-sensing hydraulic system, the Boki 6552 achieves very high excavation performance.

The short wheelbase of 1.64 m and the 4 different steering modes ensure optimum manoeuvrability.

The cab is clearly and ergonomically designed and offers excellent all-round view. The safety cabin is ROPS- and FOPS-approved. The split driver's door and the hinged front window increase comfort. The cushioned driver seat with joysticks in the arm rests prevents relative movements and takes the driver's anatomical needs into account.



## Engine

VM Motori  
84 kW/114 hp  
2,600 rpm nominal speed  
Emission level EU6c



## Chassis

4 wheel chassis  
Hydrostatic 4 wheel drive  
4 wheel steering  
Drum brake  
Track width 1410 mm  
Tyres 265/75 R 16 C  
20/25/30 or 40 km/h



## Operating characteristics

Overhang from 5,400 mm  
Lifting force 2,600 kp at 3,000 mm  
Continuously revolving superstructure



## Hydraulic system

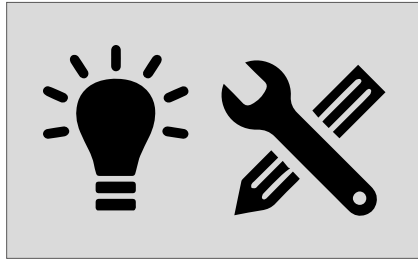
Hydraulic pump 1 x 120 l/min  
at 230 bar  
2-lever joystick control

# REFORM. Teamwork Technology.

Reform stands for advanced solutions and services that make our customers' work easier. A tool as good as a partner. This is unique in mountain agriculture and municipal technology. It is what we work towards across all our sites, with expertise and great passion.

Whatever you are planning and want to achieve, at REFORM you are always part of a strong team. Because at REFORM, we always tackle big tasks together. That is the secret of our success. That is Teamwork Technology.

## Customer satisfaction through quality



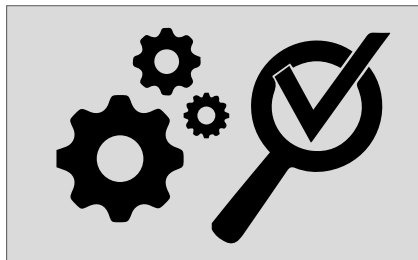
### Development and design

REFORM puts great importance on in-house development and design. We work every day on constant technical further development of our vehicles, as well as innovative ideas. Everyone working at REFORM does not just look at a single part or a specific task – everyone is part the bigger picture.



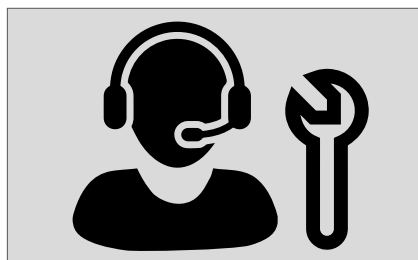
### High vertical range of manufacture

Our parts manufacturing facility manufactures a wide variety of parts, even in the smallest batch sizes. A REFORM vehicle is mainly produced in-house, which guarantees good quality. During assembly, highly qualified and continuously trained specialists produce a wide range of vehicle types and variants.



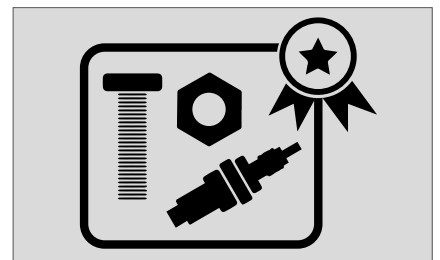
### Precise quality control

Permanent control ensures compliance with the legal standards according to the ISO 9001 quality management system. All vehicles undergo intensive functional testing before delivery.



### Strong customer service

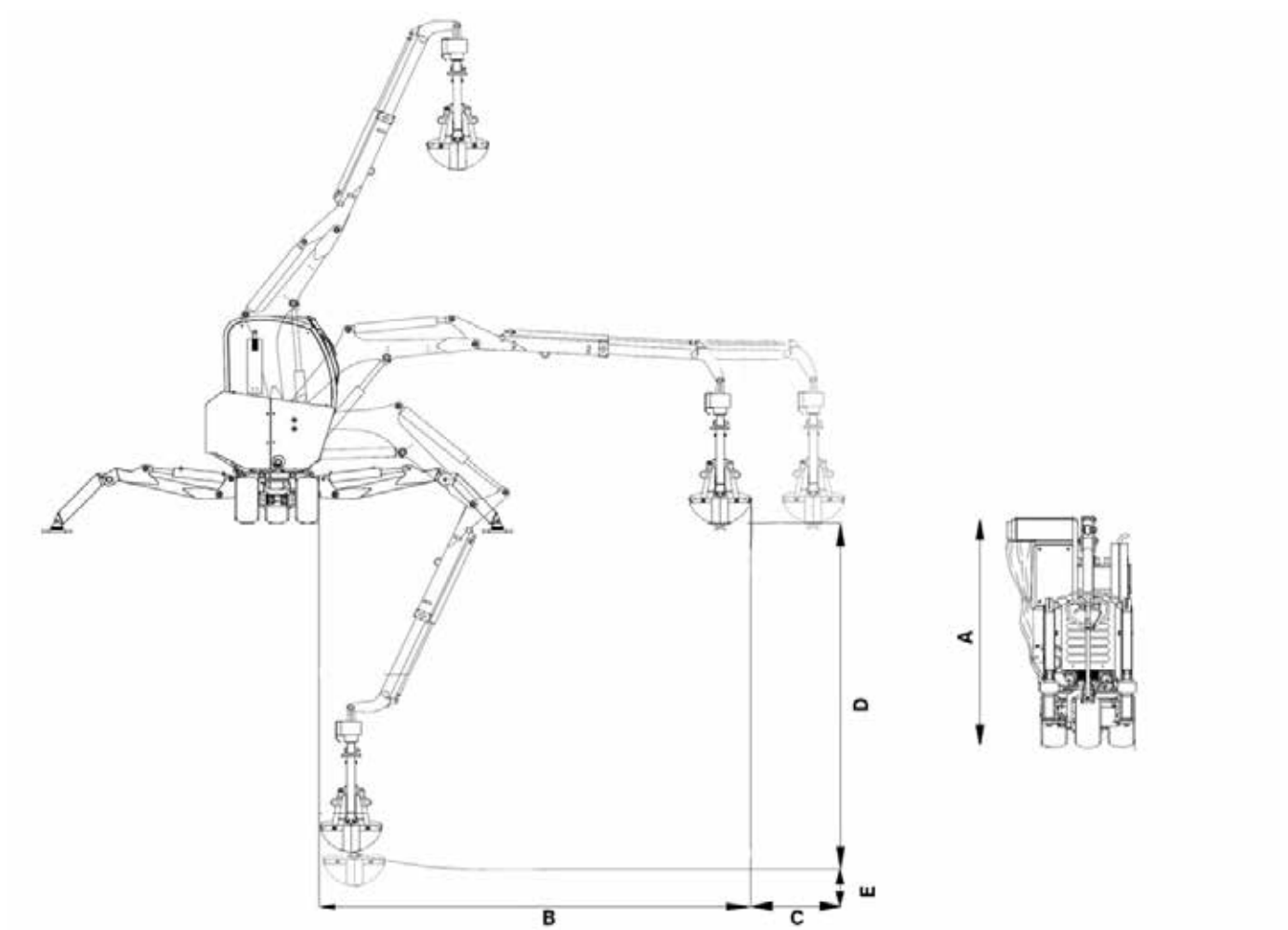
We take responsibility for as long as you are using our vehicles and machines. Our dense network of dealers and service partners gives you local support and top-quality supply of original spare parts, thanks to highly qualified and factory-trained employees.



### Original spare parts

REFORM machines are reliable tools and are designed to remain so for a long time. Thanks to the high depth of in-house production, we can even manufacture parts for machines that are 30-40 years old. Only original REFORM spare parts guarantee lasting functionality and avoid unexpected downtimes.

## Dimensions of hand-guided excavators



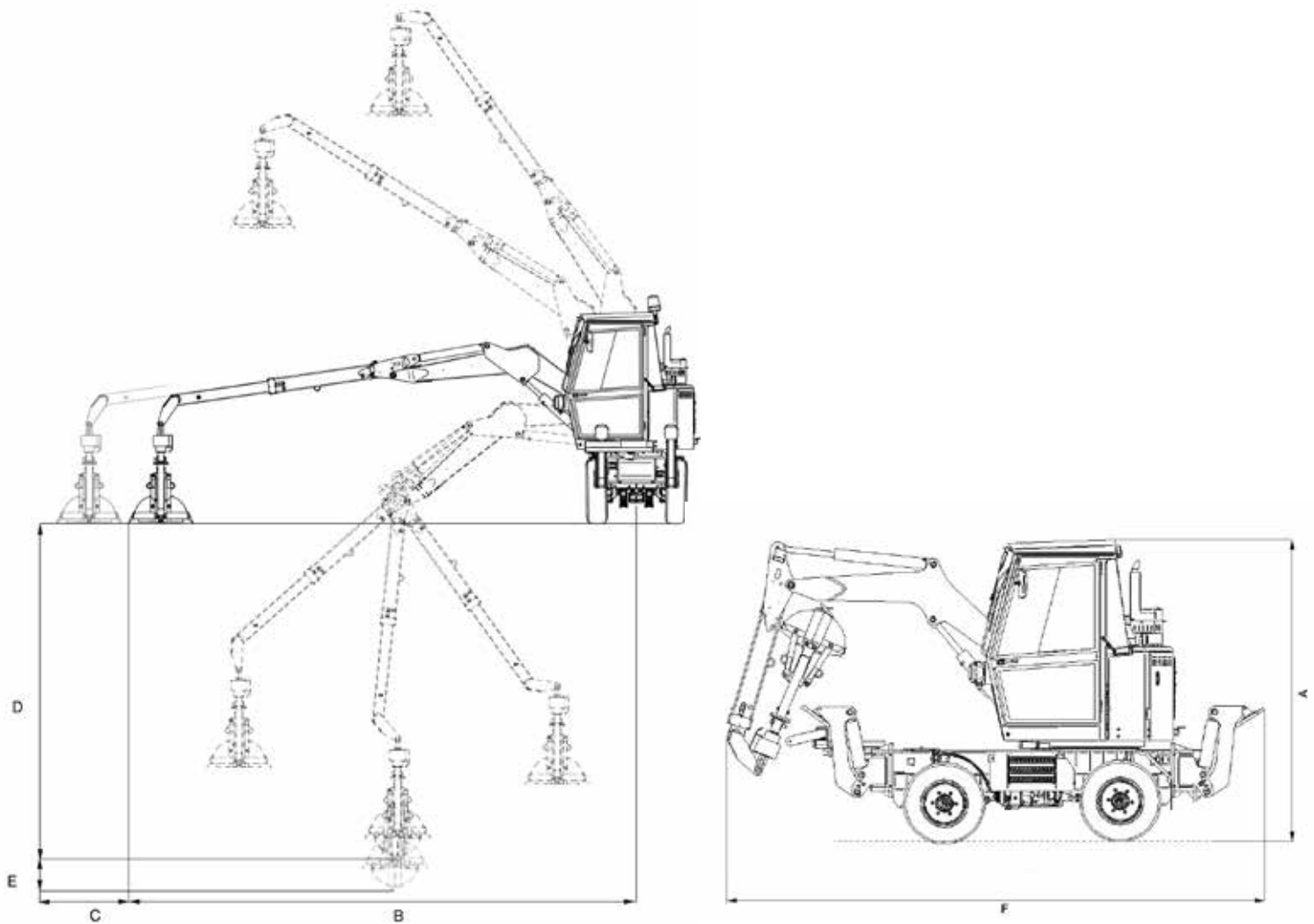
Dimensions	Boki excavator 2052 (E)	Boki excavator 2552 (E)
Dead weight	from 1,800 kg	from 1,850 kg
Wheelbase	1,680 mm	1,680 mm
A Height in transport position	2,115 mm	2,115 mm
B Maximum reach without telescopic arm	3,750 mm	3,750 mm
C Maximum reach with telescopic arm	4,470 mm	4,470 mm
D Excavation depth without telescopic arm	3,150 mm	3,150 mm
E Excavation depth with telescopic arm	3,900 mm	3,900 mm
Turning radius	1,780 mm	1,780 mm

## Tyres

A large selection of different tyres provides optimum grip for all applications.



## Dimensions of mobile excavators



Dimensions	Boki excavator 2651	Boki excavator 4552	Boki excavator 6552
Dead weight	from 2,980 kg	from 4,800 kg	from 4,980 kg
Wheelbase	1,100 mm	1,530 mm	1,640 mm
A Height in transport position	2,510 mm	2,620 mm	2,670 mm
B Maximum reach without telescopic arm	4,800 mm	4,800 mm	5,400 mm
C Maximum reach with telescopic arm	5,570 mm	6,500 mm	7,000 mm
D Excavation depth without telescopic arm	2,500 mm	2,700 mm	3,100 mm
E Excavation depth with telescopic arm	3,300 mm	4,370 mm	4,770 mm
F Overall length in transport position	4,175 mm	4,670 mm	5,020 mm
Turning radius	1,725 mm	2,275 mm	2,475 mm

## Tyres

A large selection of different tyres provides optimum grip for all applications.

Technical data	Boki excavator 2052 (E)	Boki excavators 2552 (E)	Boki excavators 2651	Boki excavators 4552	Boki excavators 6552
<b>Engine</b>					
Type	Kubota D1005-E4B	Kubota V1305-E4B	Kubota V1505	FPT VM R7531IE4	VM R754
Power hp	23.8	25.2	45	71	114
Power kW	17.5	18.5	33	52	84
Displacement/cyl.	1,001	1,498	1,500	2,228	2,970
Cyl.	3	4	4	3	4
Torque	62.8	92.6	118	246	420
Nominal speed rpm	3,000	3,000	3,000	2,600	2,600
Emission level	5	5	3A	3B	EU6c
Exhaust gas recirculation	-	-	-		✓
DPF	0	0	0		✓
SCR catalyst	-	-	-	-	✓
Fuel tank in litres	35	35	40	50	60
AdBlue tank, litres	-	-	-	-	14
Electrical system	12 V	12 V	12 V	12 V	12 V
Alternator	40 A	40 A	40 A	90 A	105 A
<b>Drive/chassis</b>					
Hydrostatic 4 wheel drive with BOKILOCK differential lock system	✓	✓	-	-	-
Hydrostatic 4 wheel drive	0	0	✓	0	0
Speed km/h	6	6	17/20	20/25/30/40	20/25/30/40
Hand-guided steering drawbar	✓	✓	-	-	-
Front axle steering with hydraulic steering assistance	-	-	✓	✓	✓
Hydraulic rear steering	-	-	-	0	0
Crab steering	-	-	-	0	0
4 wheel steering	-	-	✓	0	0
Drum brakes	-	-	✓	✓	✓
Hydraulic spring brake	-	-	✓	✓	✓
Front and rear suspension	-	-	-	✓	✓
Hydraulic axle locking	-	-	-	0	0
Hydraulic level compensation	0	0	-	0	0
<b>Tyre variants</b>					
18 x 9.50 - 8 turf tread	✓	✓	-	-	-
23 x 10.5 - 12 turf tread	-	-	✓	-	-
23 x 8.5 - 12 AG	-	-	0	-	-
24 x 13.00 -12 wide tyres	-	-	0	-	-
205/75 R 16 C	-	-	-	✓	-
225/75 R 16	-	-	-	0	-
315/55 R 16	-	-	-	0	0
265/75 R 16	-	-	-	-	✓
<b>Cab</b>					
Steel cab, half-cab	✓	✓	-	-	-
Self-supporting spacious cab	-	-	✓	✓	✓
KTL-coated cab	✓	✓	-	-	-
Closed cab incl. glass windows and door	0	0	✓	✓	✓
Tilting cab	-	-	✓	✓	✓
2-speed fan heater	✓	✓	✓	✓	✓

Technical data	Boki excavator 2052 (E)	Boki excavators 2552 (E)	Boki excavators 2651	Boki excavators 4552	Boki excavators 6552
Air conditioning	-	-	-	o	o
Adjustable rear-view mirrors	-	-	✓	✓	✓
Comfort seat, leatherette protective cover	✓	✓	✓	✓	✓
Comfort seat, cloth cover	-	-	o	o	o
Comfort seat, air-cushioned	-	-	o	o	o
Halogen working light	o	o	o	o	o
LED working light	o	o	o	o	o
LED rotating warning light	o	o	o	o	o
<b>Working hydraulics/linkages</b>					
Hydraulic system: basic equipment l/min	2 x 22	1 x 22 1 x 32	1 x 22 1 x 32	1 x 70	1 x 120
bar	180	180	200	210	230
Piano control	o	o	-	-	-
2-lever joystick control*	- (✓)	- (✓)	✓	✓	✓
Remote control as 2-lever joystick control	-	-	-	-	-

\*Joystick control only on E models

Standard	✓
Optional	o
Not available	-



# REFORM. Teamwork Technology.



PRO6110/0719

## **REFORM Österreich**

Reform-Werke  
Bauer & Co Gesellschaft m.b.H.  
Haidestraße 40, A-4600 Wels  
Tel: +43 (0) 7242 / 232-0  
info@reform.at

## **REFORM Schweiz**

Agromont AG  
Bösch 1, CH-6331 Hünenberg  
Tel: +41 41 / 784 20 20  
info@agromont.ch  
www.agromont.ch

## **REFORM Deutschland**

Kiefer GmbH  
Maschinenbau, Fahrzeugbau & Vertrieb  
Furter Straße 1, D-84405 Dorfen  
Tel: +49 (0) 8081 / 414-0  
info@kiefergmbh.de



www.reform.at

# **REFORM**